

UCSB SIS Strategic Implementation Project



Deborah Scott, Director SIS&T
September 17, 2009

Project SAIL

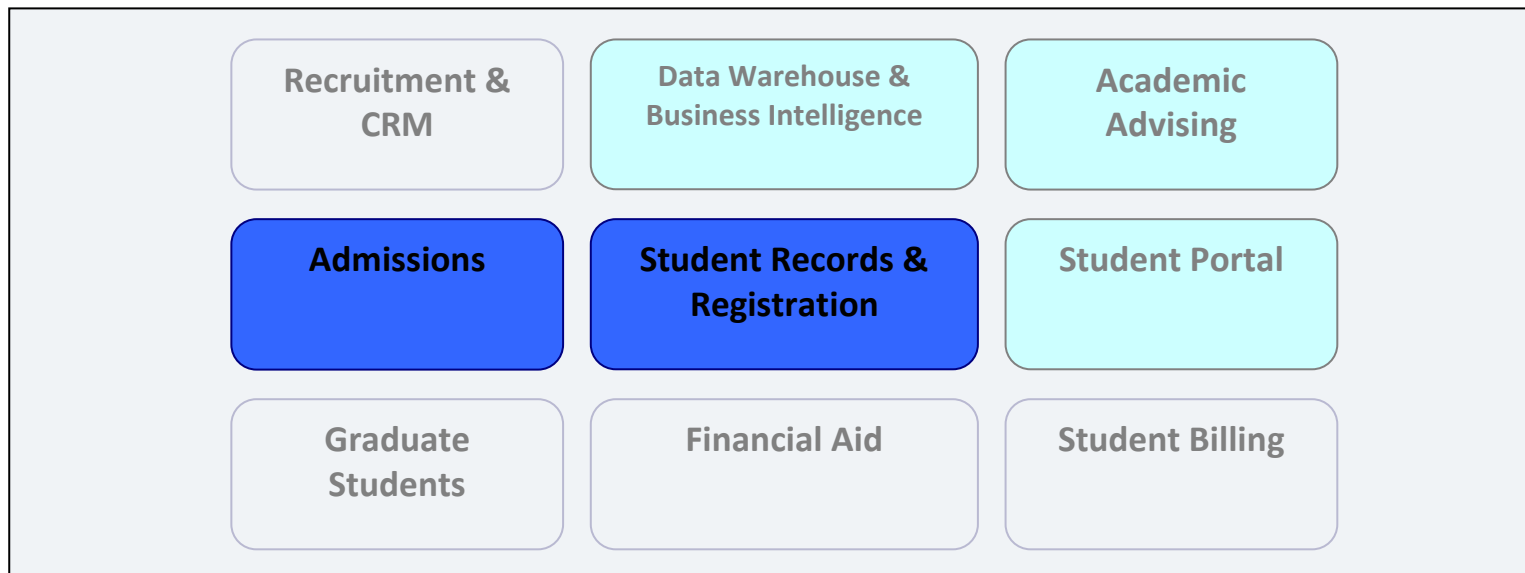
- What is SAIL?
- UCSB's implementation of the SAP Student Lifecycle Management System
 - Replace mainframe Admissions, Records and Registration systems that have served us for the past 25 years
 - Provide extendible platform to support the academic mission of the University in the future
 - A modern and integrated solution will enable planning and process improvements through the effective use of information, data, and records

History and Background

- March 2009: A revised SIS purchase proposal was endorsed by the IT Board and the Campus Committee on Budget Strategy (CCBS)
 - Limited project scope - focused on mitigating the risk of mainframe system failure: Admissions and Registrar only
 - Jointly funded by campus and Student Affairs
 - Approved and included in the Campus and SA Division 2009/10 budget plans
- June 2009 Purchased SAP ERP system Student LifeCycle Management – SLCM
 - 21,000 Student user licenses
 - 3500 Faculty/staff web client licenses
 - 125 Professional user licenses (thick client for Registrar/Admissions users)

Project Scope & Priorities

- **Primary priority:** Highly-focused transition of Admissions, Student Records and Registration information systems out of the mainframe-based solution by the end of 2012. (Darker Blue)
- **Secondary priority:** Implementing a new student portal, new data warehouse and reporting functionality, and integrated user functionality for academic advising and campus access to student data. (Lighter Blue)
- **Third priority (not included in the current scope of the project):** Fully implement SAP functionality for use throughout the student lifecycle. (Grey)



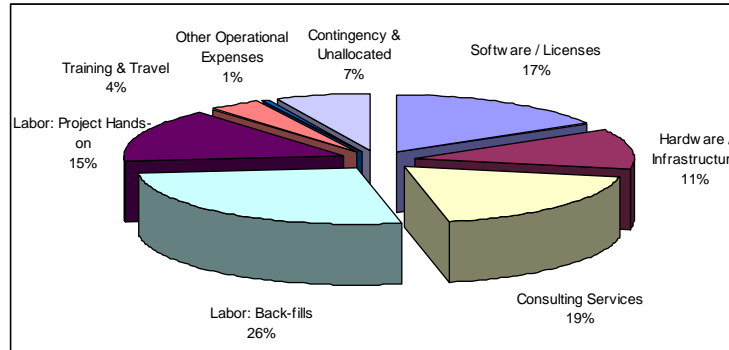
SIS Replacement (Project Name: SAIL) - Overview

1. Timeline:

2009		2010				2011				2012	
Jul - Sep	Oct - Dec	Jan - Mar	Apr - Jun	Jul - Sep	Oct - Dec	Jan - Mar	Apr - Jun	Jul - Sep	Oct - Dec	Jan - Mar	Apr - Jun
Basis Training	Funct Training	Dev, Sys Admin, DB Training		Documentation & End-User Training Prep		End-User Training Delivery		End-User Support			
Lab/IDES Env	Identity Env	DEV Env	QA Env	PROD Env		Performance Optimizations, Monitoring and Production Support					
Project Org	BLUEPRINTING			Baseline Config	Final Configuration						
			Data Conversion: Mapping, Extractions & Transformations								
			Development & Interfaces								
			Data Warehouse & Reports								
			Unit, Scenario & Load Testing 1		Integration 1	Unit, Scenario & Load Testing 2		Integration 2			
			Roles & Authorizations								
				Transition to Prod 1					Transition to Prod 2		

2. Budget Estimate:

	Annual Cost	Cumulative
2009/10	\$ 2,275,103	\$ 2,275,103
2010/11	\$ 1,639,290	\$ 3,914,393
2011/12	\$ 1,234,741	\$ 5,149,134
2012/13	\$ 850,866	\$ 6,000,000

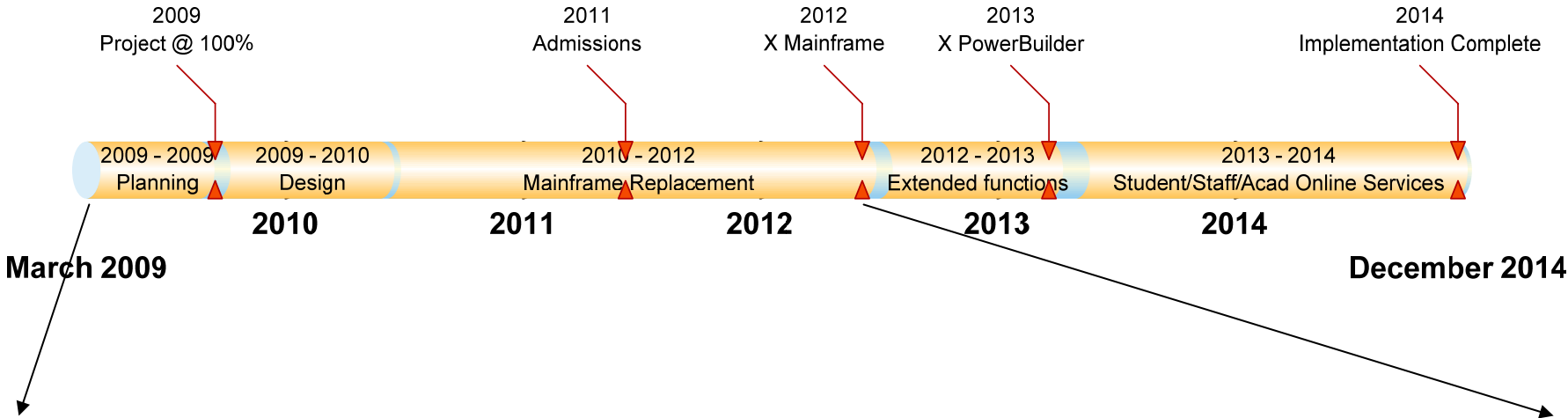


Software / Licenses	\$ 997,505
Hardware / Infrastructure	\$ 680,000
Consulting Services	\$ 1,116,300
Labor: Back-fills	\$ 1,607,000
Labor: Project Hands-on	\$ 920,000
Training & Travel	\$ 226,150
Other Operational Expenses	\$ 36,000
Contingency & Unallocated	\$ 417,045
Total:	\$ 6,000,000

3. Project Management, Coordination and Team Members:

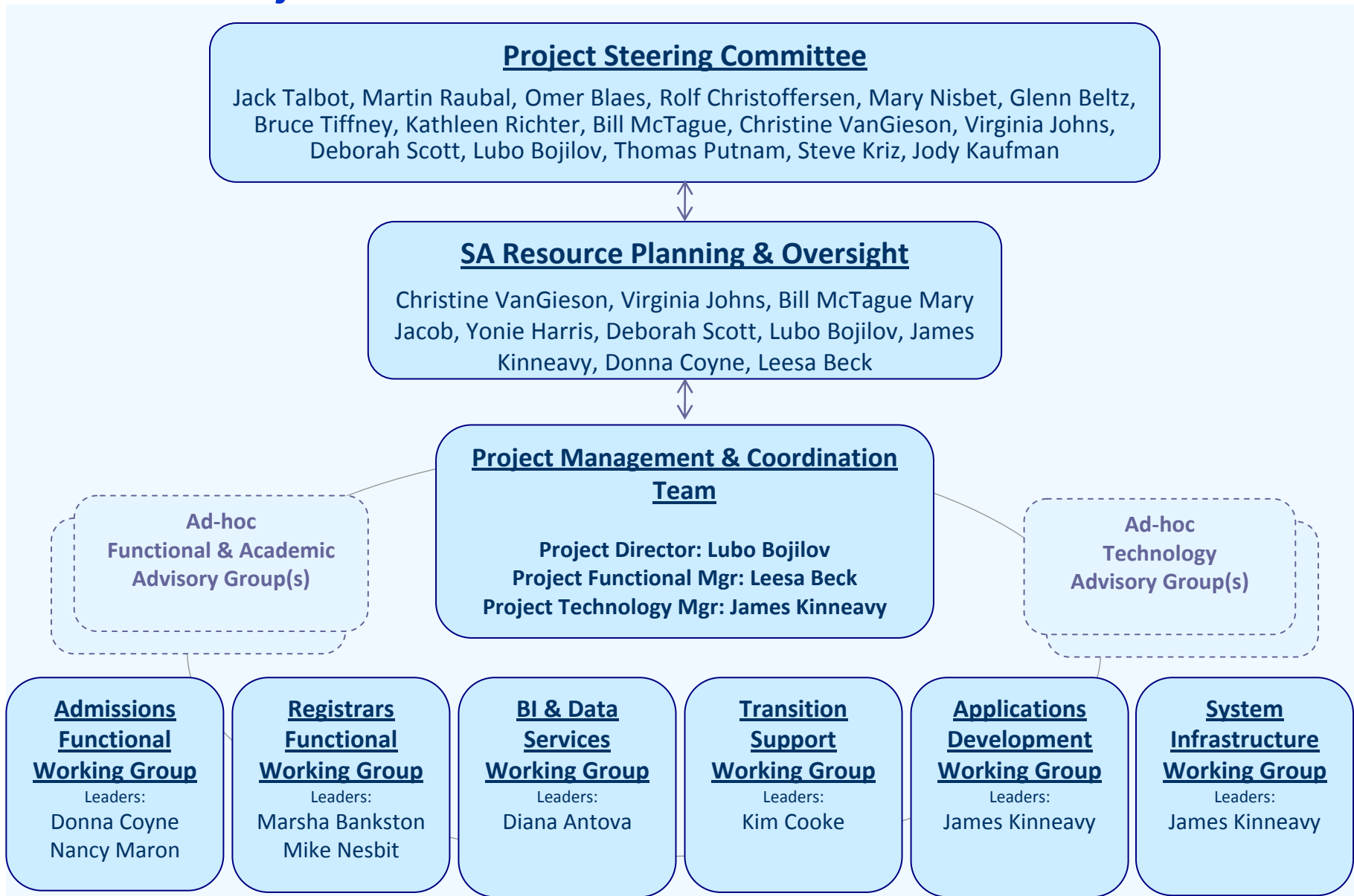
- Project Steering Committee
- Student Affairs (SA) Resource Planning & Oversight Committee
- Project Management & Coordination Team
- Project Working Groups / Workshops
- Ad-hoc Advisory Groups

Project SAIL - Timeline



2009		2010				2011				2012	
Jul - Sep	Oct - Dec	Jan - Mar	Apr - Jun	Jul - Sep	Oct - Dec	Jan - Mar	Apr - Jun	Jul - Sep	Oct - Dec	Jan - Mar	Apr - Jun
Basis Training	Funct Training	Dev, Sys Admin, DB Training			Documentation & End-User Training Prep			End-User Training Delivery			End-User Support
Training Environment	Identity Environment		DEV Environment	QA Env	PROD Env		Performance Optimizations, Monitoring and Production Support				
Project Org	BLUEPRINTING				Baseline Config	Final Configuration					
				Data Conversion: Mapping, Extractions & Transformations							
				Development & Interfaces							
				Data Warehouse & Reports							
				Unit, Scenario & Load Testing 1		Integration 1	Unit, Scenario & Load Testing 2		Integration 2		
		Roles & Authorizations									
						Transition to Prod 1		X	Transition to Prod 2		X

Project SAIL Governance Structure



Project SAIL Participating Resources

SIS Project UCSB Steering Committee Members

Professor, History	Jack Talbot
Associate Professor, Geography	Martin Raubal
Professor, Physics	Omer Blaes
Associate Professor, Molecular, Cellular & Develop. Biology	Rolf Christoffersen
Dean, L&S Undergraduate Education	Mary Nisbet
Assoc. Dean for Undergraduate Studies, College of Engineering	Glenn Beltz
Dean, College of Creative Studies	Bruce Tiffney
Assistant Dean, Graduate Division	Kathleen Richter
Assoc Vice Chancellor for IT and CIO	Thomas Putnam
Assoc. Director Accounting Services & Controls	Steve Kriz
Executive Director for Academic Affairs	Jody Kaufman

SIS Project SA Resource Planning and Oversight

Executive Director SIS&T & SA CTO	Deborah Scott
Director Resource Planning & SA CFO	Bill McTague
Director Admissions Office	Christine VanGieson
UCSB Registrar	Virginia Johns
Dean of Students	Yonie Harris
Student Services and Academic Preparation	Mary Jacob

SIS Project Management

Project Director	Lubomir Bojilov
Technology Project Manager	James Kinneavy
Functional Project Manager	Leesa Beck
Functional Team Lead - Admissions	Donna Coyne
Functional Team Lead – Student Records	Marsha Bankston
Technical Team Lead - Admissions	Nancy Maron
Technical Team Lead - Student Records	Mike Nesbit
Applications Development & Services Integration Lead	Steven Maglio
BW/Data Services Lead	Diana Antova
Training and Transition Support Lead	Kim Cooke

SIS Project Infrastructure

Basis Admin: DBA, NetWeaver & Dev Support	Nathan Walter
Basis Admin: Storage and Clients	Bob Dolin
Servers/VMWare Architecture	Cliff Chabot
Network Architecture	Tom Lawton
Basis Support	TBH

User Interface Development & Graphics Design	Eric Mayes
Admissions Programmer/Analyst	Mike Secorsky
Registrar Programmer/Analyst	Sean McGowan
Database and ETL Developer	TBH

SIS Project Functional Experts

Admissions Data Operations	Sabrina Enyeart
Admissions Application & Data Processing	Rosa Zuniga
Admissions Evaluations	Dawn Hovey
Admissions Application Processing and Workflow	Erendira McCormick
Articulations / Audits / Transcript Tracking / Support	Andrew Nixon
Curriculum & Scheduling	Rocky Moran
Curriculum & Scheduling	Jamie Sprague
Grading & Academic Progress	Rosa Lomeli
Grading & Academic Progress	Sara Cook
Grading & Academic Progress	Kevin Scott
Enrollment & Registration	JoAnn Trento
System Configuration, Operations, Fee Assessment	Dick Bush
System Configuration, Operations, Fee Assessment	Luke Lindquist
Transcripts Processing	Briana Villasebor

SIS Project Administrative Support

Budget & HR	Vessela Jivkova
Logistics	Tedi Tehrani

SIS Project Liaisons

Financial Aid Technical Liaison	Lisa Goto
L&S College Technical Liaison	Ann Ricchiazzi
Academic Staff (Advisors) Functional Liaison	Marilyn Romine
Academic Staff (Advisors) Functional Liaison	Pam Bayer
Academic Staff (Advisors) Functional Liaison	Gerianne Ramirez
Academic Staff (Advisors) Functional Liaison	Anthony Schmid

SIS Project Consultants

Project Manager	Lee Nelson
FI/HCM Integration & SLCM-Fee Calculation	Marlies Burkhard
SLCM Technical Integration	Hans-Peter Beiche
SLCM-Acad Structure/Event Planning	David Calacci
SLCM-Registration/Records	Heidi Hutchings
SLCM-Admission/Re-Admission	Tim McCready

Critical Success Factors

- *Institutional commitment*
 - Ensure significant Project Sponsor support and involvement
 - Achieve buy-in at all levels across the campus
- *Adaptation to process changes*
 - Consider this enterprise software project a functional project as much as it is an IT project
 - Prepare to adapt business practices in conjunction with needed process changes
- *A clearly defined and managed project scope*
 - Balance the scope with the constraints of time, budget, human resources, and tolerance for change.

Campus Commitment for Completion

- *Maintain a clear focus on successfully completing the primary Project SAIL scope*
 - Freeze existing systems modifications that will divert staff resources and put Project SAIL cost and timeline at risk
 - Dedicate staffing resources toward the primary Project goals
- *Follow a rigorous change management process*
 - Require UCSB SAIL Project Steering Committee exception approval for extending current systems beyond normal maintenance
 - Require UCSB SAIL Project Steering Committee approval for extending scope of the SAIL system

Strategic Investment

- This investment will help to:
 - Provide the campus with improved and integrated access to strategic information for planning and management
 - Streamline processes and systems
 - Allow more efficient and sustainable operations
 - Minimize long-term costs as we face budget uncertainties
- We believe the SAP SLCM is the right solution for UCSB at the right time
 - Contains the optimum combination of functional capability and forward-looking technical architecture
 - Leverages our existing technology investments
 - Provides the capability to serve us well in the years to come
- UCSB must maintain a strategic focus on successfully completing this very large project.
- We welcome and encourage your participation and support